

MagLoc

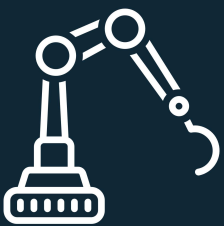
INFRASTRUCTURE-FREE
ABSOLUTE POSITIONING TECHNOLOGY



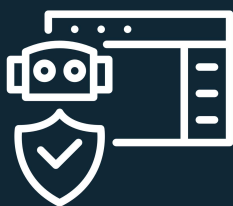
INTRO

MagLoc is a revolutionary technology for localisation of mobile systems. It rivals SLAM technology with advantages. This product delivers robust, accurate, and cost-effective positioning in environments where GPS signals are unavailable or unreliable. Designed for use without the need for additional positioning infrastructures, this solution offers advanced multi-sensor calibration and fusion capabilities, ensuring accurate positioning and robust performance in all-weather conditions and various application scenarios.

USER CASES/APPLICATION SCENARIOS



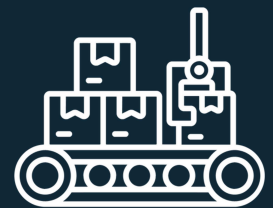
WAREHOUSE/
FACTORY



SAFETY/
SECURITY
PATROL



SERVICE/
HEALTHCARE
ROBOT



SMART
DELIVERY

ADVANTAGES

FAST Ambient Magnetic Field (AMF) MAPPING

- Simple data collection for AMR operation area
- One key creation of Ambient Magnetic Field Map and easy maintenance

ACCURATE REAL-TIME ABSOLUTE POSITIONING

- Coordinate measurement with orientation
- Quick start and sampling rate of 100HZ
- Accurate absolute positioning in any location and for long duration
- No accumulation errors or drifts

DAY/NIGHT & ALL-WEATHER ROBUST OPERATION

- Robust to all-day & all-weather conditions
- Highly effective for built environments
- Insensitive to dynamic ferromagnetic interferences

MODULARIZED COMPONENTS

- Easy mounting for most AMR structures
- Options for localization and/or mapping
- Free-up space for AMR loading design



PRODUCT SPECIFICATIONS

Size	Core Unit	145mm(L) x 130mm (W) x 45mm(H)
	Magnetometer Bar	500mm(L) x 25mm (W) x 25mm(H)
Total Weight	950g (1250g with Magnetometer Bar)	
Positioning Accuracy	Up to 10-15cm	
Positioning Accuracy with Assistive Sensors	Up to 5cm	
Positioning Output Frequency	100 Hz	
Input Power	12 ~ 36V, (peak power ~35W)	
Operating Temperature	-20 ~ +50°C	

